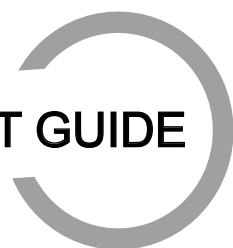




# AMPCO MINERALS

PRODUCT GUIDE



# Company Profile

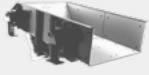
With staff, manufacturing and warehousing distributed over USA, China, Australia and Europe, AMPCO offers a balanced mix of western mindset and eastern value. Through our portfolio of crushing and screening equipment being one of the broadest available from a single manufacturer we are able to offer complete crushing and screening plant solutions, as well as a range of service offerings.

AMPCO was started by a team of industry professionals with a common mindset to create a company practicing the values of: customer focus, customer directed urgency and ambition for excellence. Guided by our global team's diverse experience, background and deep knowledge of the industry we strive to maintain a company and culture that combines the focus and agility normally seen with small businesses, with the industrial expertise, safety and quality culture associated with larger corporations.

We work hard to make our people feel valued and appreciated understanding they are our greatest asset. Our competitive edge comes through the efforts of our people and their dedication to our values. We believe in building strong and trusting business relationships with our customers and distributors. Through strategic partnerships with key suppliers we offer cost effective offerings and competitive delivery times without compromising on quality.

By fostering a culture of innovation and continuous improvement we are always looking for ways to tailor our offerings to meet our customer's diverse needs. We aspire to become the "hidden champion" of the industry and the number 1 choice for crushing and screening solutions.

# CONTENTS



## Feeders

- Grizzly Feeder
- Pan Feeder
- Apron Feeder



## Crushing Equipment

- Jaw Crusher
- Cone Crusher
- Vertical Shaft Impact Crusher
- Horizontal Shaft Impact Crusher



## Screening Equipment

- Horizontal Vibrating Screen
- Inclined Vibrating Screen
- Linear Screen



## Washing Equipment

- Coarse Material Washer
- Fine Material Washer
- Log Washer



## Magnetic Separators

- Metal Magnetic Separator
- Permanent Magnetic Separator



## Conveyors

[www.ampcominerals.com.cn](http://www.ampcominerals.com.cn)

## Characteristics of Feeders Series Product

### Reliability

- Optimized hopper, high-strength feeder body
- Reliability analysis of the parts and components
- Enable fatigue strength analysis

### High output

- High material handling capacity
- Smooth screening of bulk materials

### High performance

- Adaption to different feeding methods
- Adaptable to lower feeding heights
- Suitable for a wide range of materials
- Large feeding capacity
- Able to handle the materials with different humidity levels

### High efficiency

- Safe operability is at the foundation of the design
- Easy to install and repair
- Easy to operate

## AF Series Apron Feeder



AMPCO Apron Feeders are used in a wide range of industries such as metallurgy, chemical, building materials, mining, power and mechanical engineering etc. They can be designed with different power and lengths according to customer requirements and can be inclined up to 23 degrees. They feature a wide range of applications and high conveying capacity.

### Design Features

- Trough plate formed with cold-drawn alloy steel for high strength and impact resistance
- Torsion arm structure of the speed reducer drive for the driving mode
- Hydraulic tension device, heavy duty wear resistant tail wheel
- Drive chain in standard pitch (different pitches depending on the load)
- Forged alloy steel spindles, forged alloy steel drive gear blocks which are convenient for replacement, expansion sleeves for connection of all parts and the shaft

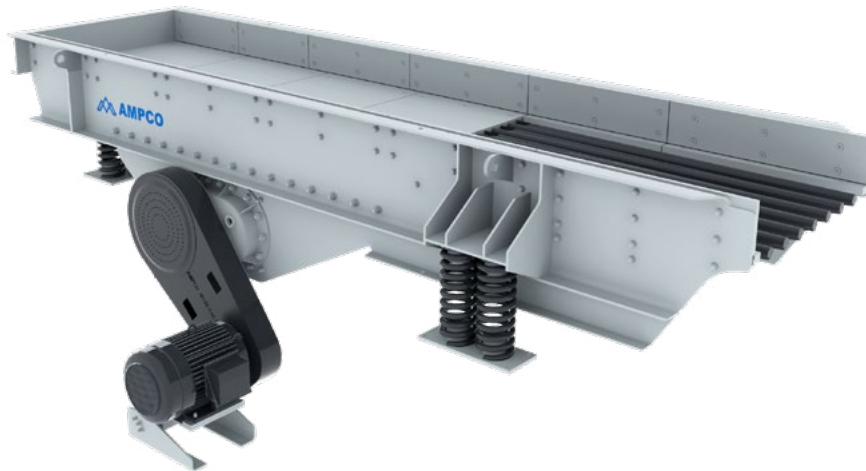
### Product Features

- Applicable to highly viscous materials, and featuring heavy loads, high conveying capacity and low material leakage
- Maintenance-free thrust wheel and lower carrier chain wheel
- Variable frequency motor

Technical Parameter Table

Model	Width	Center to center	Pitch	Speed
	Inch	ft	Inch	m/s
AF10	39"	13'-65"	7"	0.02-0.2
AF12	47"	19'-59"	7"	0.02-0.2
AF15	59"	19'-59"	7"/9"	0.02-0.2
AF18	71"	19'-59"	9"	0.02-0.2
AF22	87"	19'-59"	9"	0.03-0.2
AF24	95"	26'-53"	9"	0.03-0.2

## GF Series Grizzly Feeder



AMPCO Grizzly Feeders are used in mining, aggregates and recycling applications and are suitable for continuous processing of a wide variety of raw materials, hard as well as abrasive. The ideal equipment for pre-screening applications prior to primary crushing. It has a solid and robust frame with a high feed capacity. It is equipped with a pair of eccentric shafts on large bearings that provides amplitude and vibration angle and an extraordinary long service life. It is very easy to operate and maintain.

### Design Features

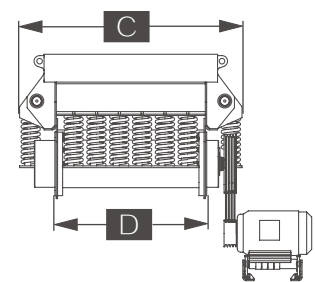
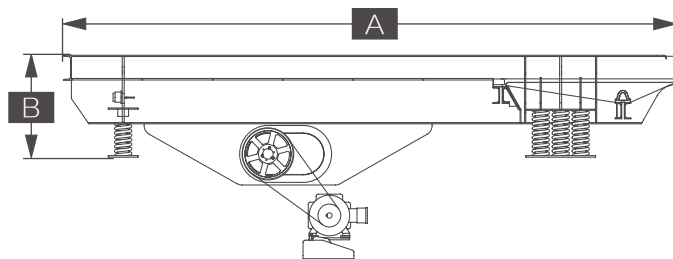
- Wholly welded and stress relieved structure
- Adjustable spacing between grizzly bars
- Single and double grizzly bar design options
- Stepless speed regulation to control feed rate
- Frame designed according to conservative finite element analysis techniques
- Gear set lubricated through oil tank and designed with a special sealing arrangement

### Product Features

- Suitable for the demands of different working conditions
- Screening efficiency of over 75%
- Flexible application and controllable feeding speed
- Stable operation of the equipment during start-up and shutdown
- Reliable performance, high performance wear liner
- Convenient and easy day-to-day operations and maintenance

Technical Parameter Table

Model	Deck	W x L	Maximum Feed Size	Stroke	Speed	Motor Power	Weight	Capacity
		Inch × ft	mm	mm	rpm	hp	lbs	stph
GF4012	1	40"×12'	600	10	500-800	20	7,826	500
GF4016	1	40"×16'	600	10	500-800	25	10,692	550
GF4616	1	46"×16'	700	10	500-800	25	11,243	605
GF4620	1or2	46"×20'	700	10	500-800	30	13,536	605
GF5217	1	52"×17'	800	11	500-800	40	14,219	683
GF5220	1or2	52"×20'	800	11	500-800	40	16,424	683
GF5224	1or2	52"×24'	800	11	500-800	50	20,944	683
GF5820	1or2	58"×20'	900	11	500-800	60	18,739	770
GF5824	1or2	58"×24'	900	11	500-800	60	25,353	770
GF6420	1or2	64"×20'	1,100	11	500-800	60	22,266	904
GF6424	1or2	64"×24'	1,100	11	500-800	60	24,581	904
GF7220	1or2	72"×20'	1,300	12	500-800	75	25,904	1,378
GF7224	1or2	72"×24'	1,300	12	500-800	100	30,864	1,378

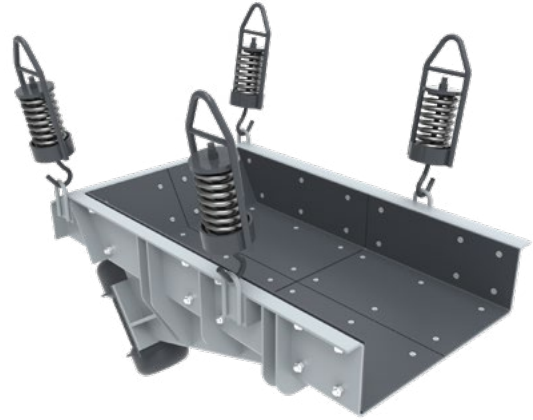
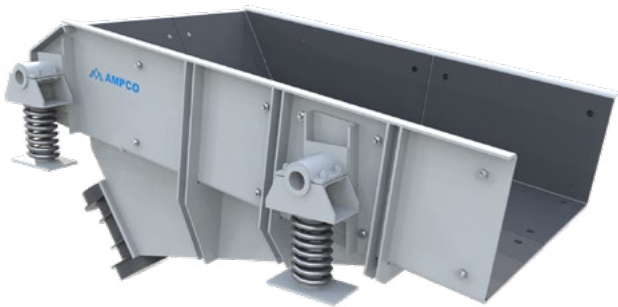


Product Dimension Table

Model	A	B	C	D
	Inch	Inch	Inch	Inch
GF4012	147"	34"	66"	40"
GF4016	195"	34"	66"	40"
GF4616	195"	38"	72"	46"
GF4620	242"	40"	72"	46"
GF5217	204"	40"	78"	52"
GF5220	242"	40"	78"	52"
GF5224	291"	40"	78"	52"
GF5820	242"	40"	85"	60"
GF5824	291"	40"	85"	60"
GF6420	242"	42"	90"	66"
GF6424	291"	42"	90"	66"
GF7220	242"	46"	100"	74"
GF7224	291"	46"	100"	74"



## PF Series Pan Feeder



AMPCO Pan Feeders are normally used for secondary/tertiary feeding in mining, quarrying and recycling operations. It is a popular product for feeding from stockpiles, silos or bins, buffering the impact of feeding from primary crushers or the main feed conveyor system. The feeder is driven by unbalanced electrical motors, it has a compact structure and easy to install.

### Design Features

- Wholly welded
- Suspended or floor-mounted installation
- Adjustable inclination for different applications

### Product Features

- High-strength and robust feeder body, long service life
- Frequency converter-controlled feed rate
- Suitable for different installation requirements

Technical Parameter Table

Model	W x L	Maximum Feed Size	Speed		Motor Power	Weight	Capacity
	Inch × Inch	mm	rpm		hp	lbs	stph
			50HZ	60HZ			
PF304	30"×48"	200	970	1,164	2.6×1.5	1,245	265
PF305	30"×59"	200	970	1,164	2.6×1.5	1,609	265
PF365	36"×59"	300	970	1,164	2.6×2	2,182	397
PF366	36"×71"	300	970	1,164	2.6×2	2,712	397
PF486	48"×71"	350	970	1,164	2.6×4	3,161	529
PF606	59"×71"	400	970	1,164	2.6×5	3,637	661



## Characteristics of Crushing Series Product

### Reliability

- Finite element analysis of the crusher body and main loaded parts
- Dynamic and kinematic force analysis of the equipment
- Fatigue strength analysis of the equipment
- Ensure the reliability control of cast and forged parts
- Ensure the whole process product quality control

### High output

- Excellent material throughput, high crushing capacity
- Selectable crushing ratio and crushing size fraction

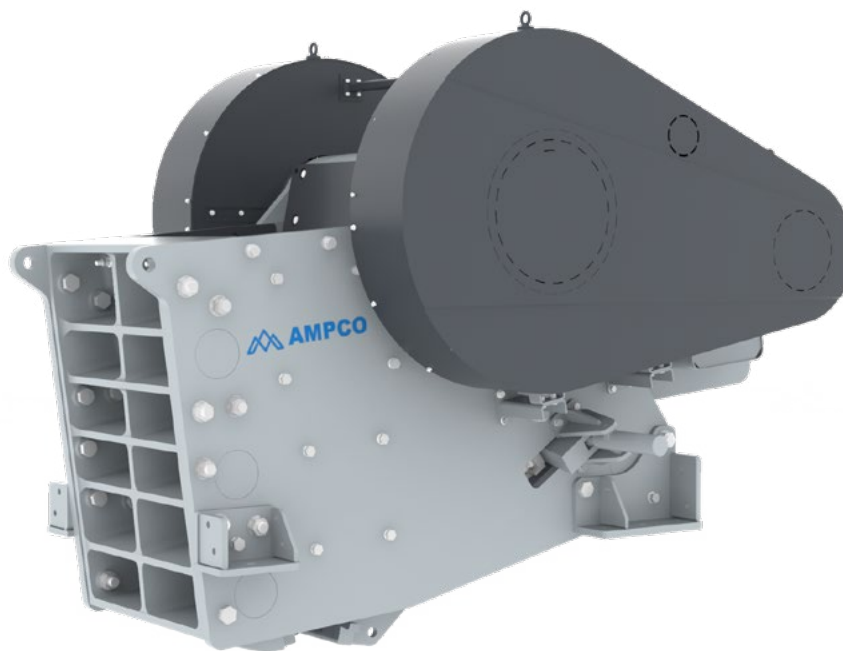
### High performance

- High installed power to crushing force utilization ratio
- Design of wear parts for different abrasive materials
- Smooth operation adapting to different conditions

### High efficiency

- Safe operability is at the foundation of the design
- Easy to install and repair
- Easy to operate
- Can provide automatic control function

## J Series Jaw Crusher



As one of the sturdiest and productive jaw crusher designs on the market, AMPCO Jaw Crushers have been engineered with highly demanding Mining and Aggregate duties in mind, where high productivity and availability is number one.

The aggressive design with a low positioned, short toggle in combination with a deep cavity and optimized nip angle, results in a jaw crusher with large throughputs at a high reduction ratio, but also minimizes slippage which reduces jaw plate wear.

### Design Features

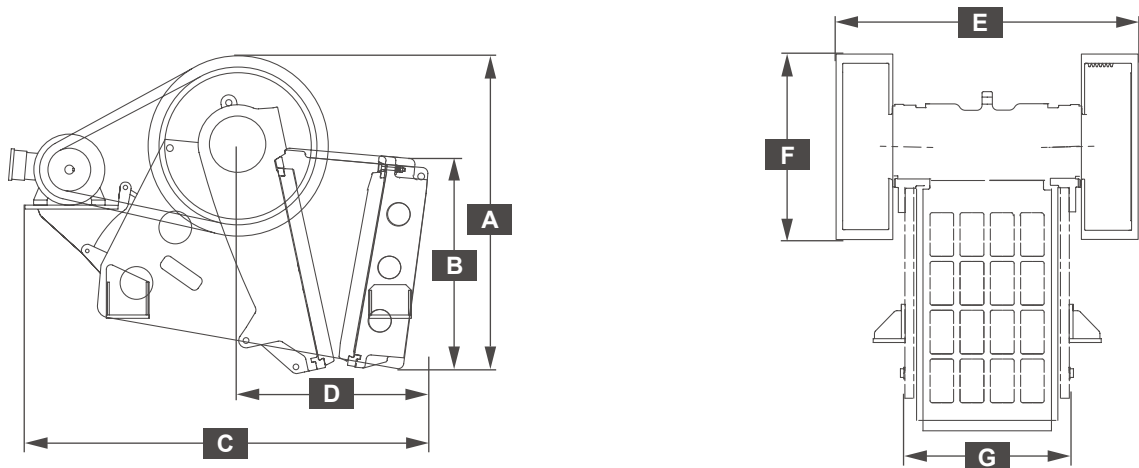
- Optimized construction with low suspension and short toggle plates
- High strength assembled frame
- Hydraulic wedge-type setting adjustment
- Low tolerance machined bearing seats and premium bearings
- Jaw plates retained by wedge locking system and replaceable backing plates

### Product Features

- Large throughput and stable operation
- Bolted frame - long service life, excellent safety and reliability in design
- Setting adjustment - quick, easy and safe
- Long service lifetime of bearings
- Optimized jaw plate designs for different working conditions
- Fully protected front wall and movable jaw components to avoid the body wear

Technical Parameter Table

Model	Feed Opening	Maximum Feed Size	Discharge Opening	Speed	Capacity	Motor Power	Crusher Weight
	Inch×Inch	mm	Inch	rpm	stph	hp	lbs
J35	20"×35"	400	2"- 5"	320	110-308	75	26,455
J40	24"×36"	500	3"- 6"	300	121-396	100	30,754
J45	30"×43"	650	3"- 8"	270	198-683	150	48,501
J50	39"×51"	800	4"- 10"	220	298-937	200	89,287
J55	43"×55"	900	5"- 10"	220	375-1,047	300	120,372
J65	47"×63"	1,000	6"- 11"	220	606-1,212	350	157,078
J80	59"×79"	1,250	7"- 12"	200	661-1,653	550	297,624
J3355	32"×55"	700	4"- 8"	250	353-827	200	69,445
J2055	20"×54"	410	2"- 5"	260	154-529	150	36,376
J2842	28"×42"	560	3"- 8"	280	165-540	150	34,612
J3448	34"×47"	700	3"- 8"	230	187-595	200	61,729
J3055	30"×54"	610	3"- 8"	260	264-750	200	59,414



Product Dimension Table

Model	A	B	C	D	E	F	G
	Inch	Inch	Inch	Inch	Inch	Inch	Inch
J35	75"	49"	110"	51"	75"	50"	41"
J40	97"	59"	134"	60"	75"	54"	43"
J45	117"	74"	150"	73"	92"	66"	50"
J50	146"	93"	181"	91"	110"	74"	59"
J55	153"	107"	193"	100"	122"	74"	65"
J65	171"	113"	220"	108"	138"	85"	74"
J80	211"	135"	242"	125"	157"	109"	91"
J3355	123"	77"	156"	74"	106"	69"	62"
J2055	89"	51"	127"	57"	96"	54"	61"
J2842	100"	62"	132"	63"	81"	54"	48"
J3448	126"	80"	163"	80"	100"	66"	54"
J3055	114"	71"	155"	73"	102"	66"	61"

# C&CM Series Cone Crusher



CM Series Cone Crusher



C Series Cone Crusher

AMPCO C&CM Series Cone Crushers are high performance crushers suitable for any secondary, tertiary or quaternary crushing duty whether it being optimizing production of high-quality aggregates or maximizing size reduction in mining.

The crushers are designed to have a large crushing force and eccentric stroke together with a high-pivot-point crushing action which results in a great feed intake capability and a high productivity. Longer service life of key components of the equipment is guaranteed. Easy maintenance procedures ensure higher start-up rates, thus reducing operating costs.

## Design Features

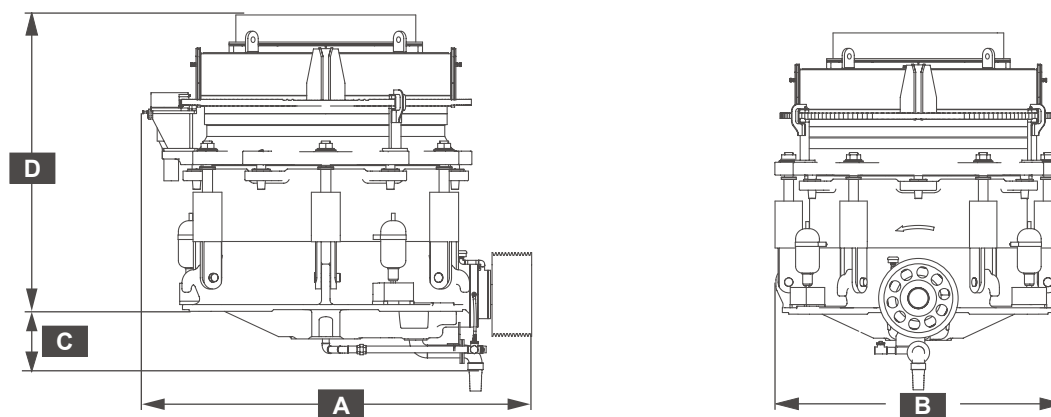
- High-strength alloy steel mainshaft, taper fit to heavy duty crusher frame
- Optimized eccentric bushing
- Multi-action cylinders for locking and accumulating mechanisms
- Hydraulic motored adjustment ring control of crusher discharge setting
- Several different bowl liner and mantle configurations available
- Integrated control of each unit

## Product Features

- Rigid & durable crusher body suitable for the most demanding duties
- Automatic tramp release protection
- Easy adjustment of discharge setting
- Optimized cavity design for each application
- Available for fully automatic remote- and centralized-controls
- Realize the tramp iron protection

Technical Parameter Table

Model		C35	C40	C45	C50	C55	C65	CM75	CM80	CM90
Technical Specification										
Nominal Diameter of the Body	Inch	35"	40"	45"	50"	57"	65"	75"	82"	92"
Motor Power	hp	150-200	300-350	450	450-500	600	700-750	750-850	850-950	1,100-1,350
Weight	lbs	24,250	31,967	47,399	62,831	84,877	123,459	198,417	291,011	359,355
Theoretical Throughput										
10	mm	85-125	100-150	150-210	180-250	220-300				
13	mm	110-150	130-190	190-270	220-320	280-380	310-420	400-520	510-680	650-900
16	mm	140-180	160-230	230-330	270-370	330-450	350-480	450-630	550-750	700-1,000
20	mm	150-190	175-250	260-350	300-410	370-500	400-530	500-660	600-800	800-1,100
25	mm	170-220	200-280	300-400	350-460	430-580	460-660	600-900	760-1,100	950-1,500
32	mm	190-235	210-310	330-450	380-500	440-640	500-730	700-1,000	940-1,250	1,200-1,800
38	mm	210-250	240-360	360-500	420-550	510-720	560-840	800-1,200	1,150-1,560	1,400-2,100
45	mm	240-300	280-400	400-560	460-600	570-800	630-930	930-1,350	1,300-1,780	1,600-2,600
51	mm		300-450	430-600	490-650	620-850	680-1,000	1,050-1,500	1,500-2,300	1,900-3,000



Product Dimension Table

Model	A	B	C	D
	Inch	Inch	Inch	Inch
C35	91"	71"	18"	65"
C40	102"	75"	20"	71"
C45	114"	89"	20"	79"
C50	122"	91"	22"	102"
C55	137"	106"	23"	106"
C65	153"	116"	26"	115"
CM75	177"	142"	28"	136"
CM80	191"	165"	33"	154"
CM90	202"	189"	37"	166"

## V Series Vertical Shaft Impact Crusher



AMPCO Vertical Shaft Impact (VSI) Crushers are suitable for tertiary and quaternary crushing duties. Capable of processing highly abrasive materials and producing aggregates of excellent cubical shape, they are popular for cubisizing/ shaping of aggregates and manufactured sand.

It can be equipped with a variety of closed and open high-speed rotors for three different cavities: rock-on-iron, rock-on-rock and iron-on-iron.

### Design Features

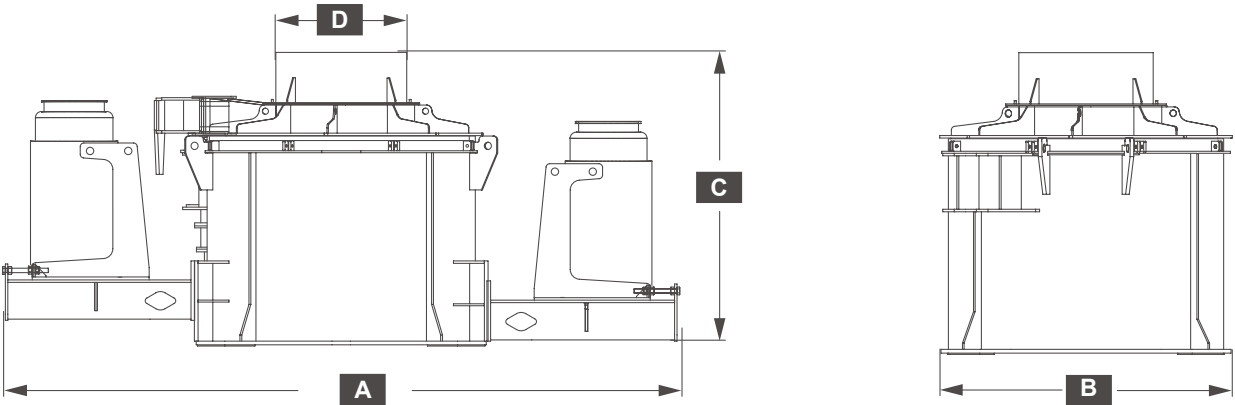
- Cavities of rock-on-rock, rock-on-iron, and iron-on-iron
- Hydraulic lifting cylinders for ease of maintenance
- Variable speed rotors
- Specially designed rotor structure with multiple rotor alternatives
- Compressed air sealing of feed chute and optional water-spraying system
- Oil lubrication system with automatic stop function

### Product Features

- Suitable for a wide range of applications
- Easy access to internal parts for repair and maintenance
- Optimization of crushing results
- Reduced wear of internal components
- Greatly reduced dust emissions monitoring of oil temperature

Technical Parameter Table

Model	Cavity Mould	Maximum Feed Size	Motor Power	Speed	Capacity	Weight
		mm	hp	rpm	stph	lbs
V70	ROS	30	200-300	1,600-2,000	77-198	24,250
	ROR	30	200-300	1,600-2,000	77-198	20,944
V90	SOS	90	300-450	960-1,450	165-330	28,660
	ROS	50	200-450	1,200-1,750	220-440	26,455
	ROR	50	200-450	1,200-1,750	220-440	24,250
V100	SOS	100	650-850	750-1,250	220-550	31,967
	ROS	50	400-850	1,200-1,750	275-550	33,510
	ROR	50	400-850	1,200-1,750	275-550	27,999
V110	SOS	100	650-1,150	600-1,150	330-550	36,376
	ROS	50	500-900	960-1,450	385-550	33,069
	ROR	50	500-900	960-1,450	385-550	28,660

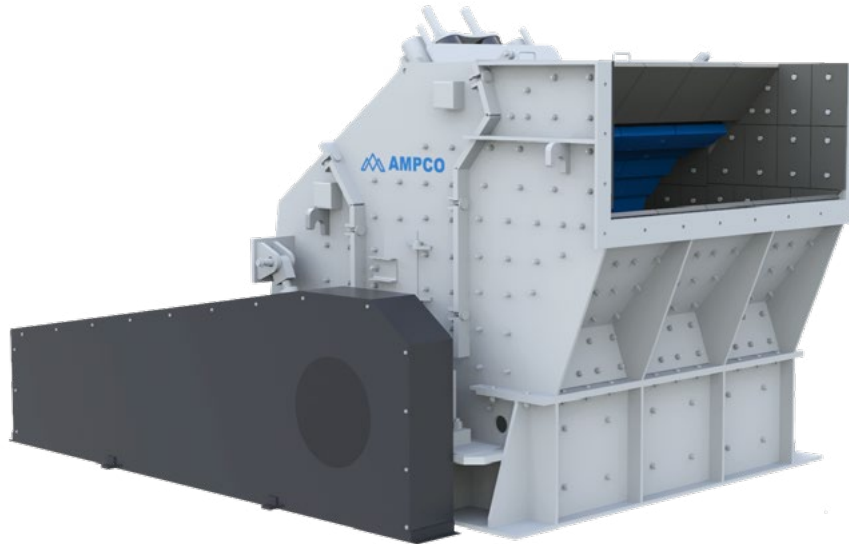


Product Dimension Table

Model	A	B	C	D
	Inch	Inch	Inch	Inch
V70	155"	77"	78"	35"
V90	169"	89"	98"	43"
V100	219"	91"	102"	43"
V110	256"	114"	118"	55"



# HP/HS/HR Series Horizontal Shaft Impact Crusher



The AMPCO Horizontal Shaft Impact (HSI) Crusher can achieve large reduction ratios, produce cubically shaped aggregates and is suitable for crushing of low abrasion rocks. It is equipped with a rotor of large rotational inertia, suitable for processing large-size raw materials and for increasing crushing efficiency. Impact crushers include three series applicable for such working conditions as coarse crushing, medium and fine crushing and recycling of concrete respectively, giving customers a wider choice of applications and expanding the application scope.

## Design Features

- HP series is suitable for the crushing of massive coarse raw materials such as limestone.
- HS series is suitable for medium crushing with fine materials to be discharged
- HR series is suitable for waste recycling and is only suitable for waste crushing when the feed material reaches maximum feed particle grade
- Rotor design with large rotational inertia
- The throat is hydraulically adjusted and the internal overhauling is carried out by means of hydraulic uncovering

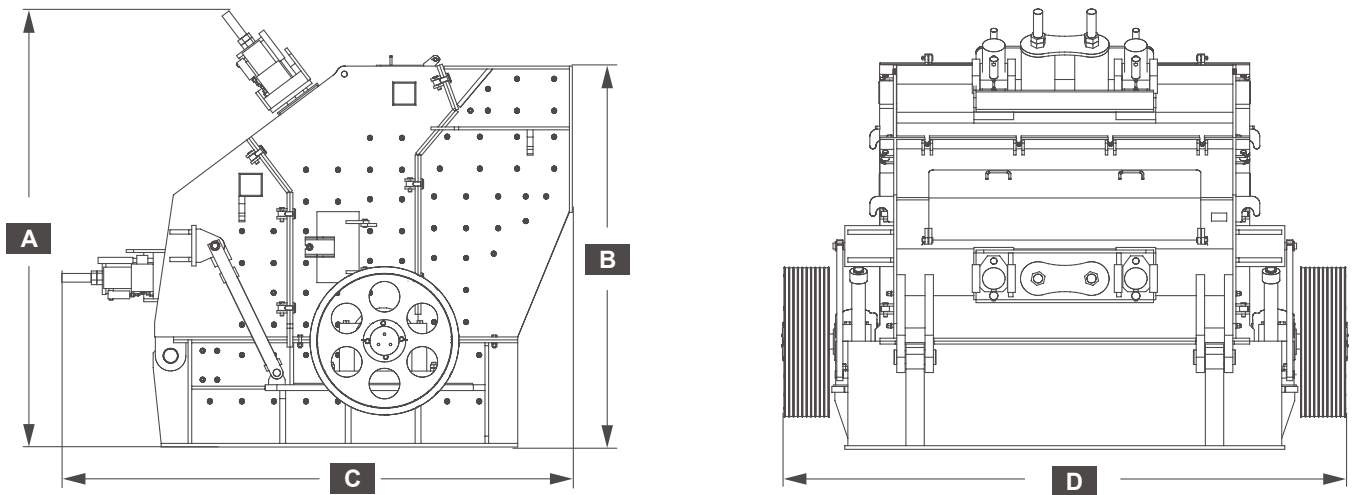
## Product Features

- Secondary and tertiary crushing chambers are available, suitable for different working conditions
- Featuring easy to install plate hammers with a reliable locking mechanism
- Quick and safe adjustment of discharge port, With cantilever lifting device (optional)

Technical Parameter Table

Model		HP55	HP65	HP85	HS35	HS55 HSM55	HS65 HSM65	HS85 HSM85	HR35	HR55	HR65
Rotor Size DxW	Inch×Inch	48"×55"	55"×65"	63"×84"	39"×36"	43"×55"	51"×65"	55"×83"	39"×36"	43"×55"	51"×65"
Maximum Feed Size	mm	600	800	1,000	400	450	500	600	500	700	800
Feed Opening HxW	Inch×Inch	31"×57"	45"×62"	63"×85"	26"×37"	28"×57"	30"×67"	33"×85"	27"×37"	31"×57"	35"×67"
Capacity	stph	275-385	390-550	770-990	90-165	165-275	275-484	330-550	90-165	165-220	220-330
Motor Power	hp	200-350	400-500	700-950	120-150	150-250	250-500	550-750	120-150	150-250	250-400
Weight	lbs	33,076	57,332	92,613	20,948	27,558 29,768	52,470 55,127	72,753 77,178	23,153	28,666	56,891

\* HSM stands for that it is equipped with the third impact rack.



Product Dimension Table

Model	A	B	C	D
	Inch	Inch	Inch	Inch
HP55	100"	96"	118"	96"
HP65	116"	117"	213"	105"
HP85	142"	145"	239"	157"
HS35	88"	83"	106"	85"
HS55(HSM55)	90"	85"	108"	94"
HS65(HSM65)	115"	96"	132"	112"
HS85(HSM85)	119"	104"	138"	148"
HR35	90"	85"	106"	85"
HR55	92"	86"	108"	94"
HR65	115"	101"	192"	112"

## Characteristics of Screening Series Product

### Reliability

- Full range of products designed using finite element analysis and modal analysis
- Dynamic and kinematic analysis ensure stable operation of equipment

### Convenient Maintenance

- Large head space between screen decks to simplify maintenance work
- Oil tank lubrication to reduce maintenance

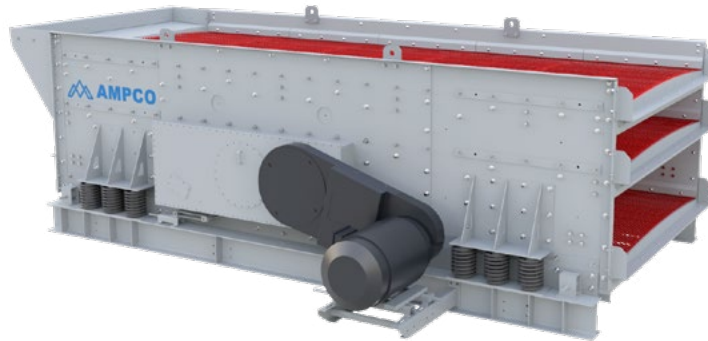
### High Performance

- Stroke length, frequency and direction easily adjusted to adapt to different working conditions.
- Different types of screens and installation inclinations available
- Large vibration intensity and vibration locus effectively reduce the material blocking

### Robustness and Wear Resistance

- Long service life vibration exciters
- Side plates connected with rivets, no weld seams
- High quality wear parts
- Robust cabinet structure

# SH/SHFS Series Elliptical Vibrating Screen



AMPCO Horizontal motion Vibrating Screens have very high screening efficiency and are particularly suitable for secondary and tertiary screening. As a horizontal screen, the installation height is very compact, which makes it suitable for many fixed and modular installations, but also some portable and mobile installations. It is a very popular product in applications with high screening efficiency requirement such as railway ballast and road base production, but also many mining duty applications.

## Design Features

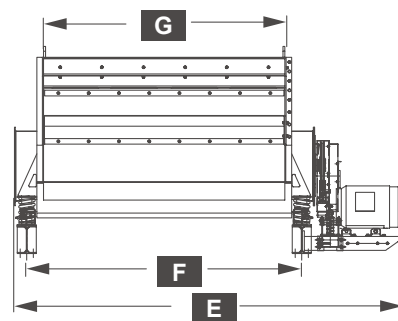
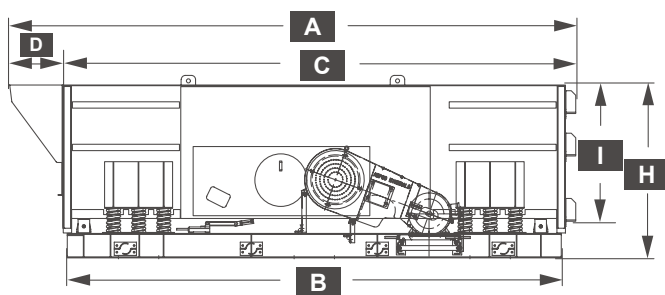
- Available in multi-deck configurations
- Adjustable: stroke, stroke direction and frequency
- Premium craftsmanship screenbox
- Horizontal installation
- Elliptical motion screen capable of handling G-forces up to 6G

## Product Features

- Flexibility for different product requirements
- Optimized performance with minimum blinding
- Stable and reliable operation, capable of high tonnage
- Good structural performance and long service life
- Low installation height
- Screening efficiency up to 95%

Technical Parameter Table

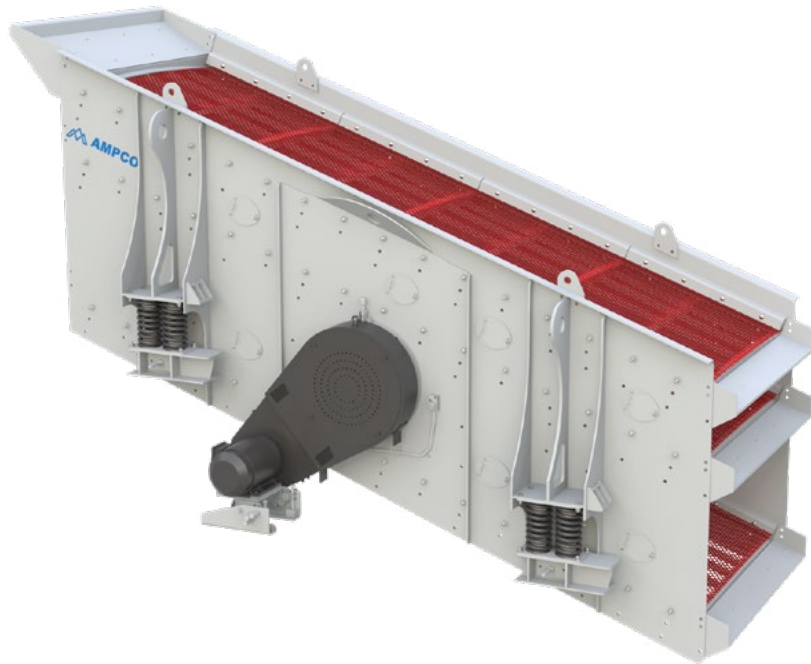
Model	Deck	W x L	Maximum Feed Size	Stroke	Speed	Motor Power	Weight
		ft×ft	mm	mm	rpm	hp	lbs
SH5162	2	5'×16'	200	13-18	675-875	30	14,330
SH5163	3	5'×16'	200	13-18	675-875	30	16,314
SH6162	2	6'×16'	200	13-18	675-875	30	14,726
SH6163	3	6'×16'	200	13-18	675-875	40	18,298
SH6202	2	6'×20'	200	13-18	675-875	40	17,857
SH6203	3	6'×20'	200	13-18	675-875	40	20,943
SH6204	4	6'×20'	200	13-18	675-875	50	22,928
SH7202	2	7'×20'	200	13-18	675-850	50	23,148
SH7203	3	7'×20'	200	13-18	675-850	50	27,557
SH7204	4	7'×20'	200	13-18	675-850	50	29,982
SH8202	2	8'×20'	200	13-18	675-850	50	24,912
SH8203	3	8'×20'	200	13-18	675-850	50	29,762
SHFS5162	2	5'×16'	50	6-12	875-1,050	40	14,330
SHFS5163	3	5'×16'	50	6-12	875-1,050	40	16,314
SHFS6162	2	6'×16'	50	6-12	875-1,050	40	14,726
SHFS6163	3	6'×16'	50	6-12	875-1,050	50	18,298
SHFS6202	2	6'×20'	50	6-12	875-1,050	50	17,857
SHFS6203	3	6'×20'	50	6-12	875-1,050	50	20,943
SHFS6204	4	6'×20'	50	6-12	850-950	60	22,928
SHFS7202	2	7'×20'	50	6-12	850-950	60	23,148
SHFS7203	3	7'×20'	50	6-12	850-950	60	27,557
SHFS7204	4	7'×20'	50	6-12	850-950	60	29,982
SHFS8202	2	8'×20'	50	6-12	850-950	60	24,912
SHFS8203	3	8'×20'	50	6-12	850-950	60	29,762



Product Dimension Table

Model	A	B	C	D	E	F	G	H	I
	inch	inch	inch	inch	inch	inch	inch	inch	inch
SH5162/SHFS5162	223"	189"	193"	26"	118"	76"	62"	56"	45"
SH5163/SHFS5163	223"	189"	193"	26"	118"	76"	62"	83"	61"
SH6162/SHFS6162	223"	189"	193"	26"	132"	90"	76"	56"	45"
SH6163/SHFS6163	223"	189"	193"	26"	132"	90"	76"	83"	61"
SH6202/SHFS6202	271"	236"	240"	26"	132"	90"	76"	56"	45"
SH6203/SHFS6203	271"	236"	240"	26"	132"	90"	76"	83"	61"
SH6204/SHFS6204	271"	236"	240"	26"	132"	90"	76"	97"	86"
SH7202/SHFS7202	271"	236"	240"	26"	145"	103"	89"	62"	50"
SH7203/SHFS7203	271"	236"	240"	26"	145"	103"	89"	81"	70"
SH7204/SHFS7204	271"	236"	240"	26"	145"	103"	89"	97"	86"
SH8202/SHFS8202	271"	236"	240"	26"	157"	114"	100"	60"	50"
SH8203/SHFS8203	271"	236"	240"	26"	157"	114"	100"	81"	70"

# SI Series Circular Vibrating Screen



The AMPCO Inclined Vibrating Screen (SI) can be used for screening of all types of materials and is suitable for most installations, whether fixed, modular, portable or mobile. It is used across many different industrial sectors such as aggregate, mining and recycling and is common in final screening of aggregates, for coal preparation, metallic ore concentration etc.

## Design Features

- Available in multi-layer frames
- Optional amplitude and adjustable vibration frequency
- Motor frame with Rosta spring support limit
- Advanced production process of screening chambers
- 15°/20° installation
- The vibration locus of the screening machine is elliptical and double-amplitude can reach up to 12mm

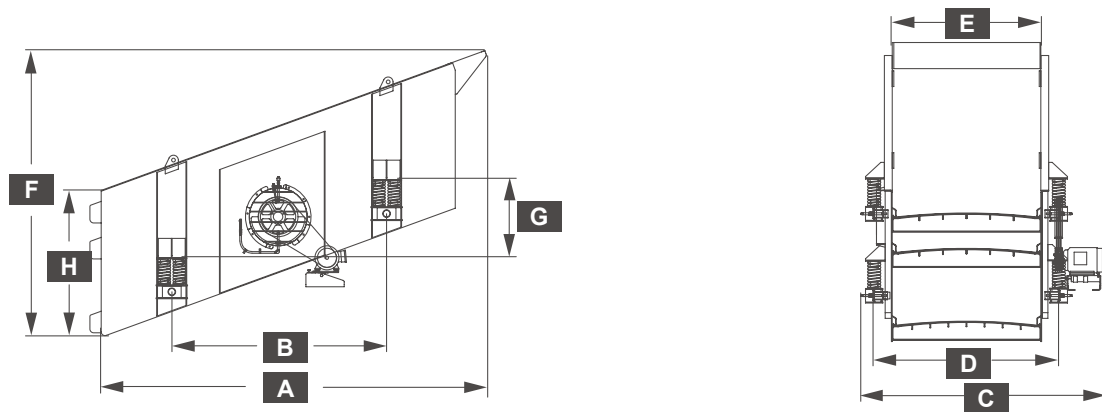
## Product Features

- Flexibility for different product requirements and varying working conditions
- Optional amplitude, adjustable vibration direction and vibration frequency
- Stable and reliable operation, capable of high tonnage
- Excellent structural performance and long service life
- Screening efficiency up to 85%



Technical Parameter Table

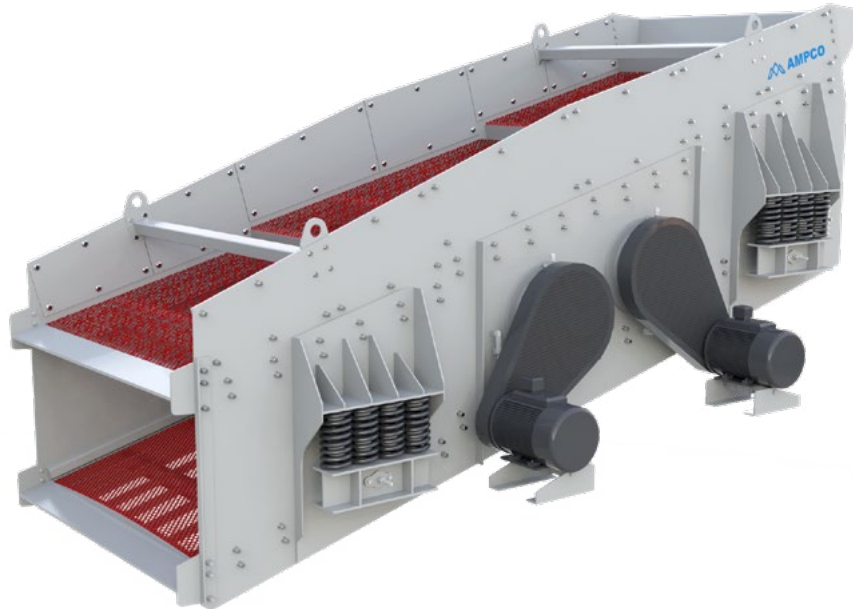
Model	Deck	W x L	Maximum Feed Size	Speed	Motor Power	Weight
		ft×ft	mm	rpm	hp	lbs
SI5162	2	5'×16'	200	800-900	15	11,111
SI5163	3	5'×16'	200	800-900	15	13,558
SI6162	2	6'×16'	200	800-900	20	12,566
SI6163	3	6'×16'	200	800-900	20	15,392
SI6202	2	6'×20'	200	800-900	25	14,550
SI6203	3	6'×20'	200	800-900	25	17,586
SI7202	2	7'×20'	200	800-900	30	20,062
SI7203	3	7'×20'	200	800-900	25*2	28,219
SI8202	2	8'×20'	200	800-900	25*2	23,148
SI8203	3	8'×20'	200	800-900	30*2	29,762
SI8204	4	8'×20'	200	800-900	30*2	39,683
SI8242	2	8'×24'	200	800-900	40*2	33,510
SI8243	3	8'×24'	200	800-900	40*2	38,580
SI9242	2	9'×24'	200	750-850	40*2	39,683
SI9243	3	9'×24'	200	750-850	50*2	44,092
SI10242	2	10'×24'	200	750-850	50*2	48,501
SI10243	3	10'×24'	200	750-850	50*2	52,910



Product Dimension Table

Model	A	B	C	D	E	F	G	H
	inch	inch	inch	inch	inch	inch	inch	inch
SI5162	209"	113"	111"	81"	63"	131"	41"	58"
SI5163	209"	113"	111"	81"	63"	152"	41"	77"
SI6162	209"	113"	124"	93"	74"	131"	41"	58"
SI6163	209"	113"	124"	93"	74"	152"	41"	77"
SI6202	253"	158"	124"	93"	74"	150"	57"	58"
SI6203	253"	158"	124"	93"	74"	167"	57"	77"
SI7202	253"	158"	137"	105"	86"	165"	57"	75"
SI7203	253"	158"	137"	105"	86"	187"	57"	98"
SI8202	255"	158"	150"	117"	98"	159"	57"	75"
SI8203	255"	158"	150"	117"	98"	188"	57"	99"
SI8204	253"	168"	150"	117"	98"	219"	62"	125"
SI8242	298"	180"	154"	117"	98"	176"	66"	75"
SI8243	298"	180"	154"	117"	98"	207"	66"	102"
SI9242	298"	180"	166"	129"	111"	176"	67"	77"
SI9243	298"	180"	166"	129"	111"	207"	67"	102"
SI10242	301"	182"	179"	145"	123"	177"	67"	77"
SI10243	301"	182"	179"	145"	123"	209"	67"	102"

# SISP Series Circular Vibrating Coarse Screen



AMPCO Circular motion Inclined Vibrating Screens (SISP) are used for screening of all types of coarse materials and are suitable for installing in screening applications after primary crushing thanks to its rugged design, allowing for feed sizes up to 400 mm. Its upper and middle screen decks can be equipped with screen panels either in high-strength wear-resistant steel plate, or in polyurethane. Thanks to its solid and robust structure, designed with high availability and ease of maintenance in mind, it is a very popular choice for heavy-duty coarse screening applications in metallic ores and aggregates.

## Design Features

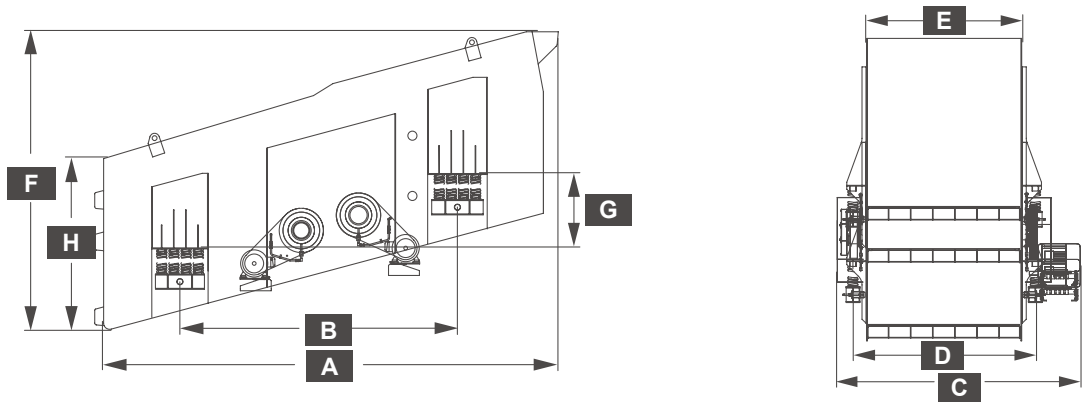
- Available in multi-deck configurations
- Bars, cast steel plates, steel plates, etc. are available for the screen decks
- A combination of eccentric block and eccentric shaft
- Advanced production process of screening chambers
- Advanced bearing lubrication design

## Product Features

- Increase application flexibility
- Flexibility for varying working conditions, capable of handling large materials
- Optimized performance with minimum blinding
- Stable and reliable operation, capable of high tonnage
- Excellent structural performance and long service life
- Smooth vibration and powerful excitation motion

Technical Parameter Table

Model	Deck	W x L	Maximum Feed Size	Stroke	Speed	Motor Power	Weight
		ft×ft	mm	mm	rpm	hp	lbs
SISP5162	2	5'×16'	400	10	700-850	30	18,298
SISP6162	2	6'×16'	400	10	700-800	40	19,180
SISP7202	2	7'×20'	400	10	700-800	25*2	29,762
SISP8202	2	8'×20'	400	11	700-800	25*2	32,628
SISP8242	2	8'×24'	400	11	700-750	30*2	43,210
SISP8243	3	8'×24'	400	11	700-750	50*2	46,297



Product Dimension Table

Model	A	B	C	D	E	F	G	H
	inch	inch	inch	inch	inch	inch	inch	inch
SISP5162	207"	128"	112"	81"	62"	128"	35"	65"
SISP6162	207"	128"	125"	93"	75"	128"	31"	65"
SISP7202	248"	164"	139"	105"	86"	146"	44"	72"
SISP8202	248"	164"	156"	117"	99"	146"	44"	72"
SISP8242	286"	181"	156"	117"	99"	169"	48"	85"
SISP8243	286"	181"	156"	117"	99"	195"	48"	112"

## SL Series Linear Screen



AMPCO linear screen is equipped with self-synchronous exciter, which has the advantages of low failure rate and less maintenance. The exciter can be removed and replaced as a whole, which greatly reduces the maintenance time. With flexible and adjustable amplitude, excitation angle, setting angle, and excitation frequency, it can not only be installed on the fixed or modular structure, but also configured in the mobile workstation, so it can be widely used in such industries as building materials, mining, coal, and smelting etc.

### Design Features

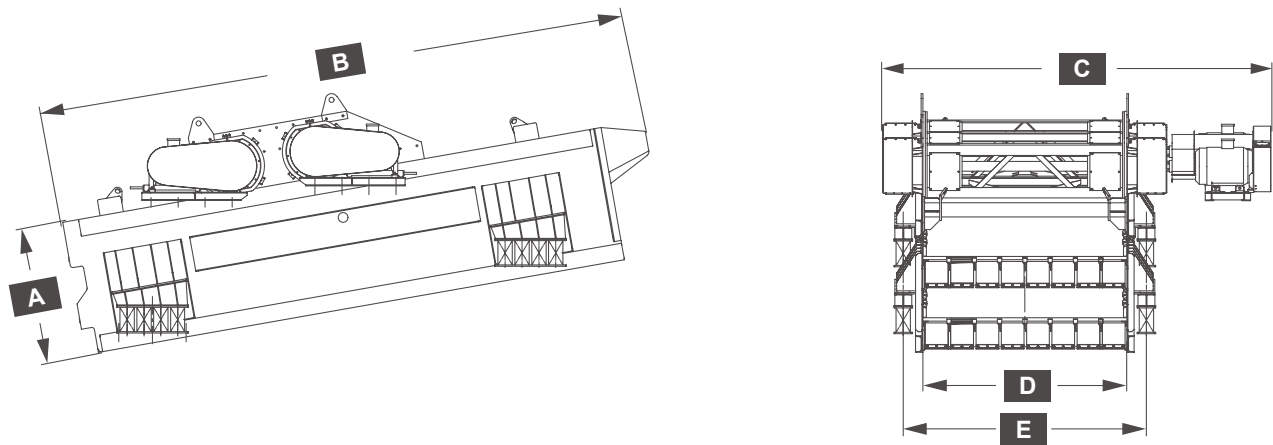
- Multi-layered frame selection
- Optional amplitude, adjustable vibration direction and vibration frequency
- Advanced workmanship of the screen box
- Setting angle of 0~20 degrees for installation
- The vibration locus of the screening machine follows straight line, so it can screen and grade the materials effectively

### Product Features

- Suitable for different product screening needs
- Smooth material screening, not easy to cause the hole plugging and material clogging
- Stable working state and high processing capacity
- Good structural performance, long service life, small wear of the screen or screen plate
- Reduce the installation height effectively

Technical Parameter Table

Model	Deck	W x L	Maximum Feed Size	Stroke	Speed	Installation Angle	Motor Power	Weight
		ft×ft	mm	mm	rpm	°	hp	lbs
SL24602	2	8'×20'	150	6~14	700~1,100	0~20	25x2	27,740
SL24732	2	8'×24'	150	6~14	700~1,100	0~20	30x2	34,443
SL30602	2	10'×20'	150	6~14	700~1,100	0~20	50x2	33,870
SL30732	2	10'×24'	150	6~14	700~1,100	0~20	50x2	48,067
SL36602	2	12'×20'	150	6~14	700~1,100	0~20	50x2	46,855
SL36732	2	12'×24'	150	6~14	700~1,100	0~20	50x2	62,832



Product Dimension Table

Model	A	B	C	D	E
	inch	inch	inch	inch	inch
SL24602	63"	275"	181"	95"	114"
SL24732	63"	326"	181"	95"	114"
SL30602	63"	275"	198"	119"	137"
SL30732	67"	323"	205"	119"	137"
SL36602	73"	265"	226"	143"	163"
SL36732	73"	316"	226"	143"	163"

## Characteristics of Washing Series Product

### Reliability

- Spiral blade shafts
- Suitable for washing operations with different requirements, providing a variety of water inflowing and material feeding methods
- Special sealing for underwater tail shaft
- High torque reducer

### High Capacity

- Washing process of a large amount of material
- Different rotation speeds to optimize washing efficiency
- Different combinations ensure the separation of mud and stone in the materials

### High efficiency

- Easy to install and repair
- Safe operation

# LW Series Log Washer

With oversized massive paddles and heavy-duty constructions, AMPCO log washers remove tough, insoluble, plastic clays. Its maximum feed size is up to 100mm and it is suitable for flushing and dewatering of all kind of large rock.

## Design Features

- Structure in heavy steel plate
- Specially-designed heavy duty gearbox
- Specially-designed water discharge opening
- Specially-designed layout arrangement of vanes

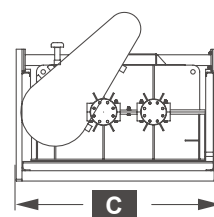
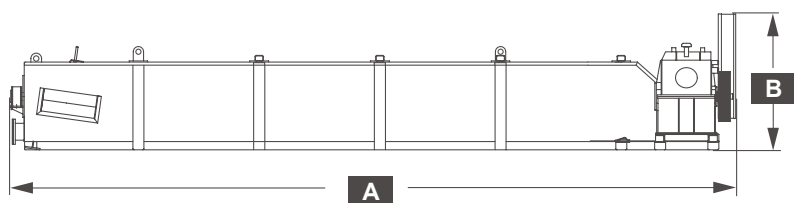
## Product Features

- High strength body and long service life
- Capable of continuous, heavy-load operations
- Easy to drain after cleaning the tank or in extremely cold weather
- Improved cleaning results



Technical Parameter Table

Model	Auger Diameter	Tank Length	Maximum Capacity	Maximum Feed Size	Motor Power	Water Volume	Speed	Washer Weight	Runtime Weight
	inch	inch	stph	mm	hp	m <sup>3</sup> /h	rpm	lbs	lbs
LW3630	36"	360"	49-121	75	100-148	12-114	32	38,889	87,677
LW3635	36"	420"	49-121	75	148	12-114	32	47,200	104,014
LW4430	44"	360"	77-176	100	148-200	17-170	26	57,915	139,288
LW4435	44"	420"	77-176	100	200	17-170	26	70,944	165,853

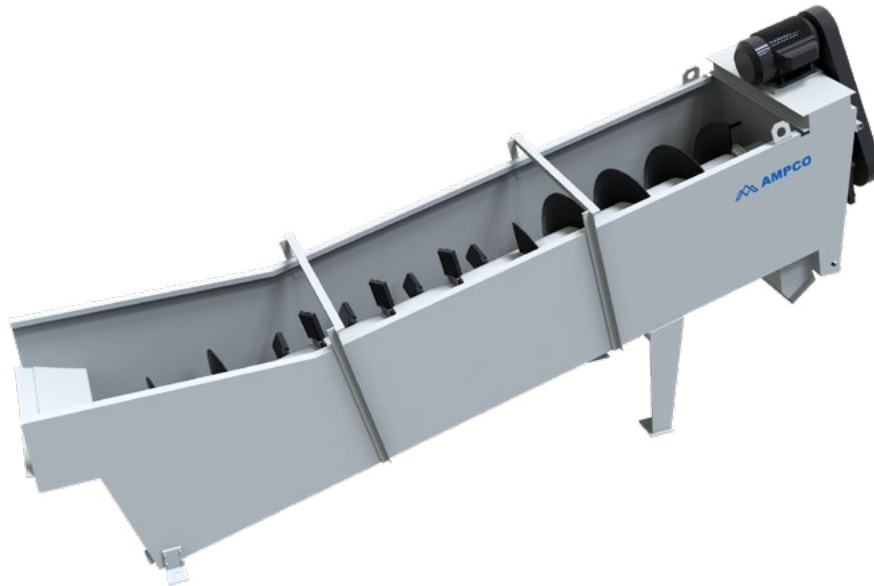


Product Dimension Table

Model	A	B	C
	inch	inch	inch
LW3630	416"	78"	90"
LW3635	470"	61"	90"
LW4430	434"	95"	113"
LW4435	483"	95"	113"



# CW/BW Series Coarse Material Washer



AMPCO Coarse Material Washers are used to wash away concrete and other contaminants from aggregates smaller than 75 mm size. The contaminants are washed out with the overflow while aggregates are pushed out with paddles and screw vanes. With its premium vanes and reliable and stable sealing structure, the AMPCO Coarse Material Washer offers a very stable and reliable operation.

## Design Features

- Structure made from heavy steel plates
- Bolted spiral blades and paddles
- Specially-designed layout arrangement of vanes
- Optional alternative rotational speeds to suit customer requirements

## Product Features

- High strength body and long service life
- Capable of operating long time in heavy load applications
- Easily replaceable wear-resistant parts
- Improved cleaning results
- Water volume can be adjusted as needed



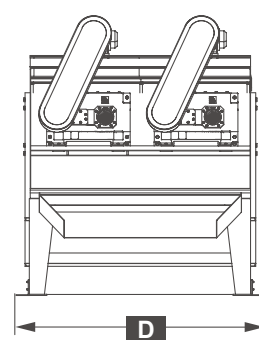
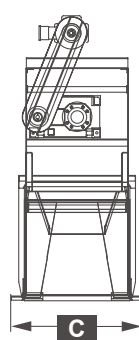
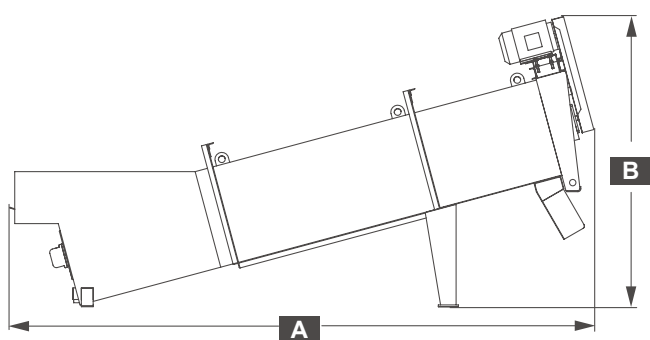
**Before Washing**



**After Washing**

Technical Parameter Table

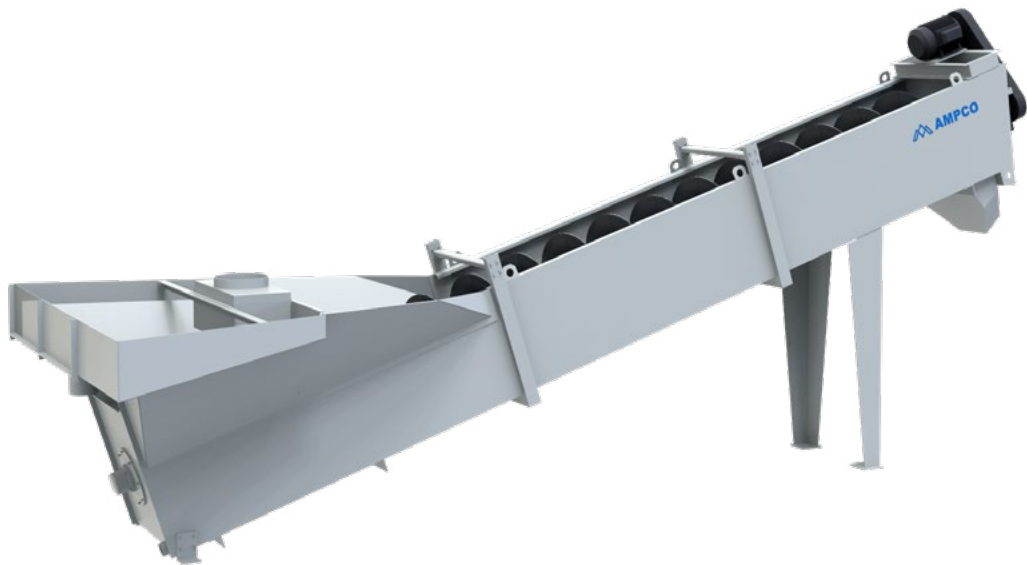
Model	Auger Diameter	Tank Length	Maximum Capacity	Maximum Feed Size	Motor Power	Water Volume	Speed	Washer Weight
	inch	inch	stph	mm	hp	m <sup>3</sup> /h	rpm	lbs
CW3618	36"	215"	150-175	60	30	91-136	32	12,544
CW4420	44"	240"	200-250	75	40	114-170	26	18,584
CW3618D	36"×2	215"	315-350	60	30×2	159-207	32	22,013
CW4420D	44"×2	240"	400-495	75	40×2	204-250	26	30,644
BW3618	36"	215"	150-175	63	40	91-136	32	12,544
BW4420	44"	240"	200-250	75	50	114-170	26	18,585
BW3618D	36"×2	215"	315-350	63	40×2	159-207	32	22,013
BW4420D	44"×2	240"	400-495	75	50×2	204-250	26	30,644



Product Dimension Table

Model	A	B	C	D
	inch	inch	inch	inch
CW3618/BW3618	253"	125"	58"	-
CW4420/BW4420	284"	144"	71"	-
CW3618D/BW3618D	253"	125"	-	96"
CW4420D/BW4420D	284"	144"	-	112"

## FW Series Fine Material Washer



AMPCO Fine Material Washers are used to wash away and separate clay, dirt and other foreign objects from aggregate materials. Its: sealing structure, adjustable overflow, wear plates, and reliable transmission mechanism ensures an effective cleaning and dewatering.

### Design Features

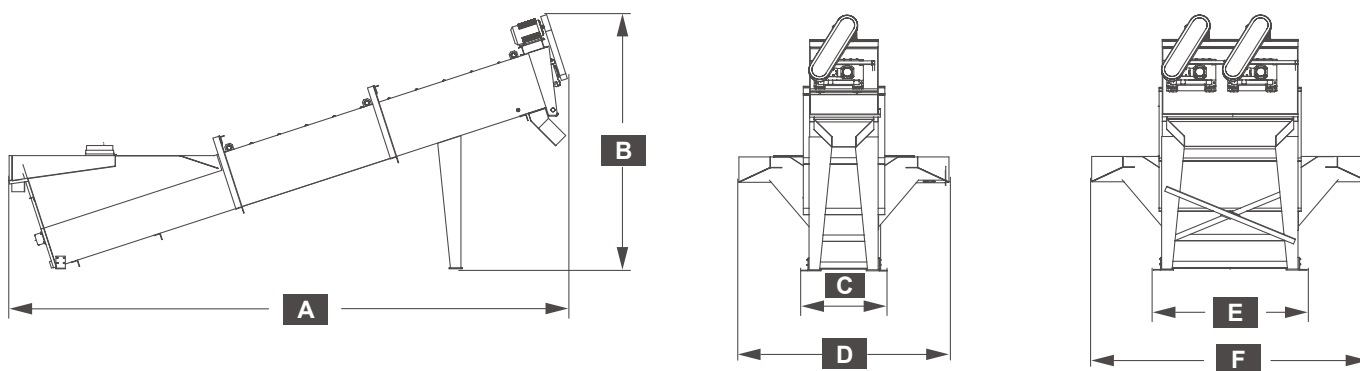
- Structure made of heavy steel plates
- Adjustable overflow wear plates
- Wear plates mounted with threaded bolts
- Selection of different speeds available

### Product Features

- High strength body and long service life
- Optimized cleaning and dewatering
- Easy to replace and effective wear protection
- Water content in gravel after washing is controllable

Technical Parameter Table

Model	Auger Diameter	Tank Length	Maximum Capacity	Maximum Feed Size	Motor Power	Water Volume	Speed	Washer Weight
	inch	inch	stph	mm	hp	m <sup>3</sup> /h	rpm	lbs
FW3625	36"	307"	100	10	15	9-82	21	12,743
FW4432	44"	385"	170	10	25	14-168	17	22,201
FW5434	54"	394"	270	10	40	14-216	14	30,402
FW6636	66"	433"	395	10	60	14-261	11	46,143
FW3625D	36"×2	307"	200	10	15×2	24-141	21	21,694
FW4432D	44"×2	385"	346	10	25×2	29-318	17	41,767
FW5434D	54"×2	394"	545	10	40×2	29-386	14	61,024
FW6636D	66"×2	433"	790	10	60×2	29-568	11	90,423
FW7238D	72"×2	460"	950	10	100×2	29-700	11	116,405



Product Dimension Table

Model	A	B	C	D	E	F
	inch	inch	inch	inch	inch	inch
FW3625	335"	156"	55"	111"	-	-
FW4432	418"	190"	64"	154"	-	-
FW5434	435"	205"	78"	176"	-	-
FW6636	484"	226"	89"	174"	-	-
FW3625D	335"	156"	-	-	92"	149"
FW4432D	418"	190"	-	-	115"	206"
FW5434D	435"	205"	-	-	138"	236"
FW6636D	484"	226"	-	-	178"	264"
FW7238D	516"	247"	-	-	192"	278"

## Features of magnetic separators

### Reliability

- Reinforced drive rollers and bearing blocks
- Conveyor belts protected by stainless steel guards

### High output

- High efficiency in removing ferromagnetic impurities
- Automatic cleaning, automatic iron unloading

### High Performance

- Powerful magnetic fields
- Self-cooling, high energy efficiency

### High Efficiency

- Easy to install and maintain
- Easy operation and high safety
- High operation rate

# EM&EMS Series Electro magnetic Separator



AMPCO EM&EMS-series iron removers adopts permanent magnet to remove iron. They are a kind of equipment that can generate powerful magnetic attraction. With adjustable electromagnetic attraction strength, they are not only suitable for use in iron ore applications particularly, but also suitable for use in the power, coal and building materials industries. The equipment can remove ferromagnetic impurities from the material to ensure the safe and normal operation of all crushing machinery and equipment and to prevent the conveyor belt from being damaged by ferrous objects.

According to the method of unloading the iron, the iron remover can be divided into stationary iron remover and self-cleaning iron remover. The stationary iron remover is in the mode of manual iron unloading and the self-cleaning iron remover is in the mode of unloading the iron parts from the magnets automatically. Both types of iron removers are equipped with rectifiers in accordance with international standards.

## Design Features

- Equipment can be suspended directly from the fixed frame (which is normally mounted above the belt conveyor)
- Self-cleaning iron remover has the belt conveyor surrounding the electromagnet
- The belt conveyor is equipped with stainless steel guards on the outer surface of the
- By moving the conveyor belt, the iron parts attracted onto the stainless steel guard will be automatically unloaded and discharged into the scrap iron collection box

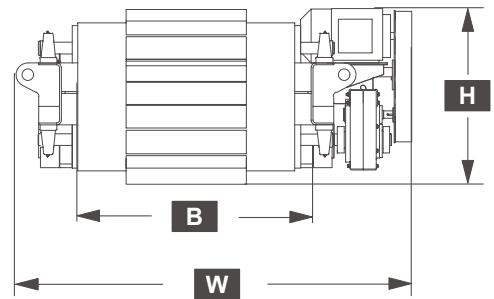
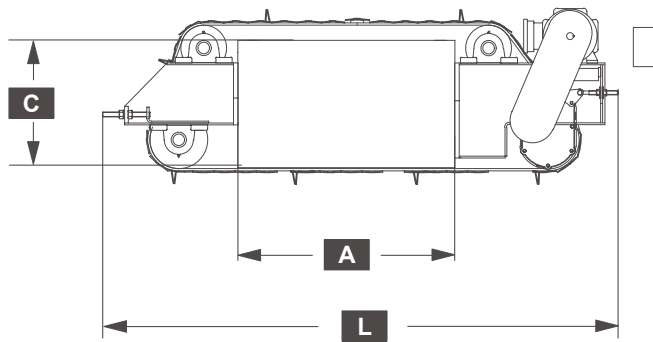
## Product Features

- Aluminum oxide used as electromagnet materials
- Electromagnets cooled with heat pipes
- Easy installation of the equipment
- Safe and reliable operation
- Conveyor belt protected by stainless steel guards
- Reinforced bearing blocks for the rollers

## Technical Parameter Table

EMS Fixed Type		
Model	Adapt to the bandwidth	Weight
	inch	lbs
EMS30	30"	2,646
EMS36	36"	3,351
EMS42	42"	4,057
EMS48	48"	5,203
EMS54	54"	6,063
EMS60	60"	8,499

EM Self-cleaning Type			
Model	Adapt to the bandwidth	Weight	Motor Power
	inch	lbs	hp
EM30	30"	2,646	5
EM36	36"	3,351	5
EM42	42"	4,057	5
EM48	48"	5,203	5
EM54	54"	6,063	7
EM60	60"	8,499	7



## Product Dimension Table

EMS Fixed Type			
Model	A	B	C
	inch	inch	inch
EMS30	30"	36"	21"
EMS36	36"	42"	21"
EMS42	42"	48"	21"
EMS48	48"	54"	21"
EMS54	54"	60"	20"
EMS60	66"	66"	21"

EM Self-cleaning Type			
Model	L	W	H
	inch	inch	inch
EM30	80"	60"	29"
EM36	86"	65"	29"
EM42	92"	71"	29"
EM48	98"	77"	29"
EM54	104"	83"	30"
EM60	110"	95"	31"

\* Electromagnets can be used alone as the iron removal equipment.



# PM&PMS Series Permanent Magnetic Separator



AMPCO PM&PMS-series iron removers adopts permanent magnet to remove iron. They are a kind of equipment that can generate powerful magnetic attraction and suitable for use in the power, coal and building materials industries. The equipment is designed to remove ferromagnetic impurities from the material to ensure the safe and normal operation of all crushing machinery and equipment and to prevent the conveyor belt from being damaged by ferrous objects.

According to the method of unloading the iron, the iron remover can be divided into stationary iron remover and self-cleaning iron remover. The stationary iron remover is in the mode of manual iron unloading and the self-cleaning iron remover is in the mode of automatic iron unloading. For the permanent magnet, the power supply is not required and it will be driven by the electric motor or hydraulic motor of the belt conveyor.

## Design Features

- Equipment can be suspended directly from the fixed frame
- Self-cleaning iron remover has the belt conveyor surrounding permanent magnets
- With the operation of the conveyor belt , the iron will be discharged to the scrap iron collection box through automatic unloading.

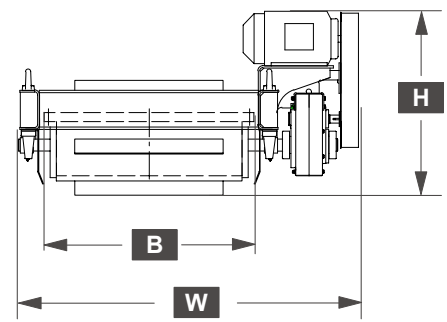
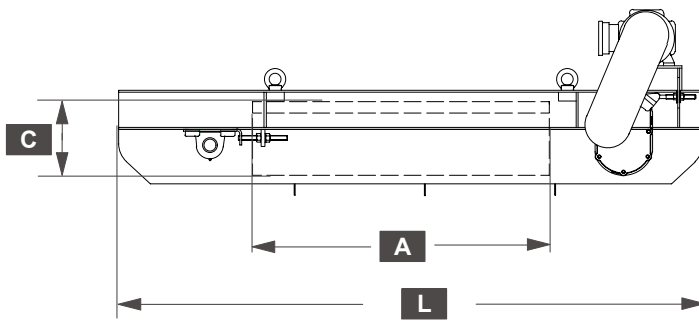
## Product Features

- Easy installation of the equipment
- Safe and reliable operation
- Reinforced bearing blocks for the rollers

## Technical Parameter Table

PMS Fixed Type		
Model	Adapt to the bandwidth	Weight
	inch	lbs
PMS30	30"	1,301
PMS36	36"	1,345
PMS42	42"	1,565
PMS48	48"	1,698
PMS54	54"	2,050
PMS60	60"	2,138

PM Self-cleaning Type			
Model	Adapt to the bandwidth	Weight	Motor Power
	inch	lbs	hp
PM30	30"	2,493	3
PM36	36"	2,624	3
PM42	42"	2,866	3
PM48	48"	3,042	5
PM54	54"	3,411	5
PM60	60"	3,549	5



## Product Dimension Table

PMS Fixed Type			
Model	A	B	C
	inch	inch	inch
PMS30	36"	34"	10"
PMS36	42"	34"	9"
PMS42	48"	34"	9"
PMS48	54"	34"	9"
PMS54	60"	34"	9"
PMS60	66"	34"	9"

PM Self-cleaning Type			
Model	L	W	H
	inch	inch	inch
PM30	82"	55"	30"
PM36	88"	55"	30"
PM42	94"	55"	30"
PM48	100"	55"	30"
PM54	106"	55"	30"
PM60	112"	55"	30"

\* Permanent magnets can be used alone as the iron removal equipment.

## Features of conveyors

### Reliability

- Robust structure, heavy duty truss
- Suitable for different sites

### Performance

- Modular design, quick configuration of length
- Personalized customization to meet different needs

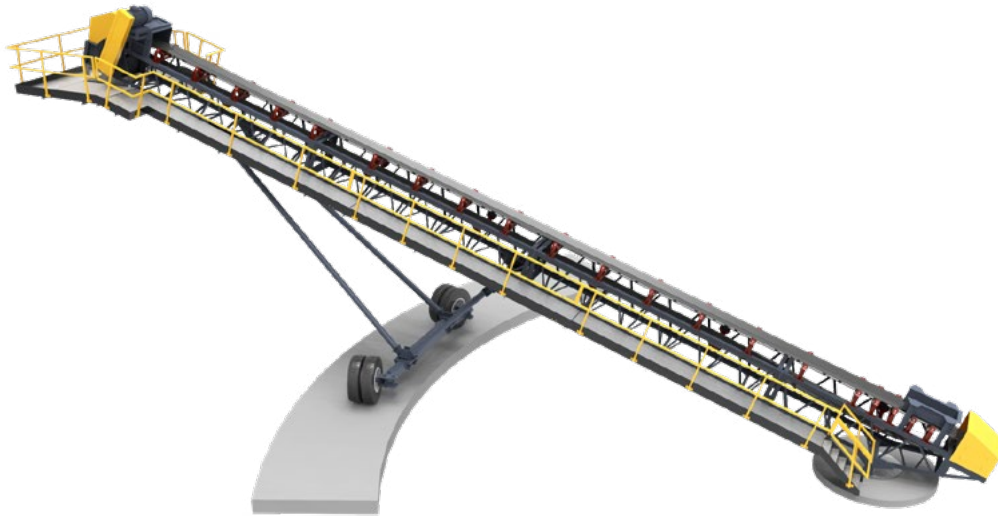
### High output

- Long transportation distance, and the feeding route can be changed at any time
- Simple structure, low cost

### High efficiency

- Ease of installation and maintenance
- Ease of operation, high safety
- High operation rate

# Conveyors



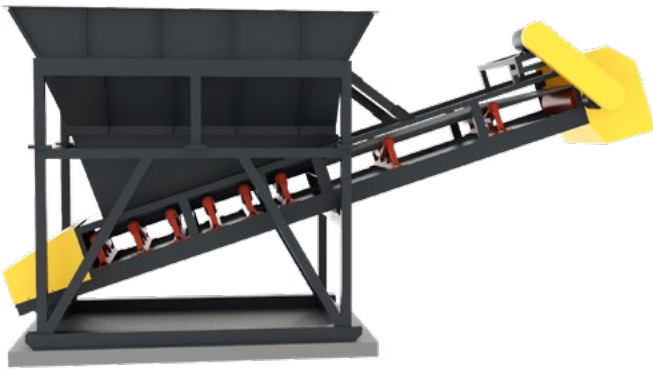
AMPCO offers a wide range of belt conveyors in various structural forms. With belt widths from 18" to 72", lengths from 2m to several kilometers and belt speeds from 1.6m/s to 4.5m/s, the conveyors features reliable and robust truss construction with standardized truss design for quick configuration to suit different lengths, and modular design which significantly reduces design cycles and transport costs.

## Features of Stacking conveyors

- Heavy-duty construction
- 360° rotation
- Legs lifted by oil cylinders
- Trailer structure for easy movement
- Meets the requirements for radial stacking
- Mobile wheel carrier with manual or electric options

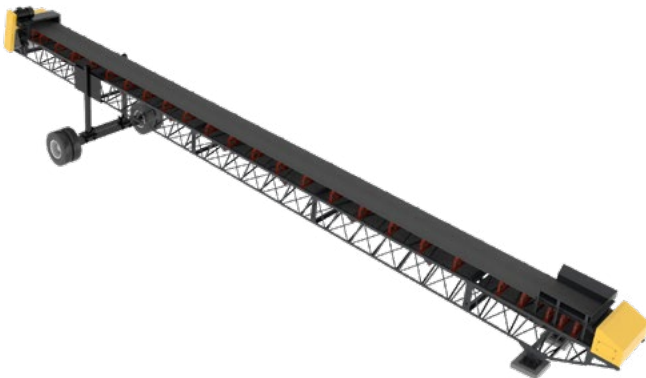
## Type of conveyors

- Stationary short distance conveyor: Suitable for on-site transportation and deployment in mines
- Stationary long distance conveyor: Suitable for long distance transportation in mines, terminals and ports
- Mobile conveyor: To be moved using trailer, which is highly mobile
- Overhead chain conveyor: Easy to install and dismantle, suitable for medium and long distance transportation
- Grasshopper type: Short-distance, multi-machine relay transportation, easy to move
- Stacker conveyor: Featuring rotation, lifting, and extension and contraction functions, large stacking area
- Feeder conveyor: Large handling capacity, two-way feeding output



### Features of the conveyor belt feeding system

- Integrated design of the conveyor and hopper
- Multiple feed forms
- Portable and easy to move
- Manual and hydraulic grating options
- Optional remote control



### Features of grasshopper conveyors

- Tyre configuration which is convenient for the change of positions
- The dropping material height from the head can be adjusted as required
- Trailer construction for easy transportation
- With use of multiple belts, the feed route can be changed at any time



### Features of stationary conveyors

- Long transport distances
- Simple structure and low cost
- Adaptable to different sites
- Easy maintenance



### Feature of overhead chain conveyors

- The equipment can be hung directly on the fixing frame

AMPCO Minerals, Inc.

WWW.SUPERRIOR-IND.COM

[www.ampcominerals.com](http://www.ampcominerals.com)

[www.ampcominerals.com.cn](http://www.ampcominerals.com.cn)